

NEW! Near Infrared in Real Time

Now includes auto contrast and edge enhancement

IR-1000 Real Time CCD Camera

- High sensitivity
- Near infrared
- New! Automatic contrast
- New! Edge enhancement

The newly designed IR-1000 infrared CCD camera is ideal for applications requiring high sensitivity in the near infrared. The high gain of the camera enables users to detect images in real-time (30 frames/sec.) even when energy levels are very low.

With wide range gain and black level controls, the IR-1000 enables the user to enhance image contrast and offers the ability to apply short-term integration for increased sensitivity.

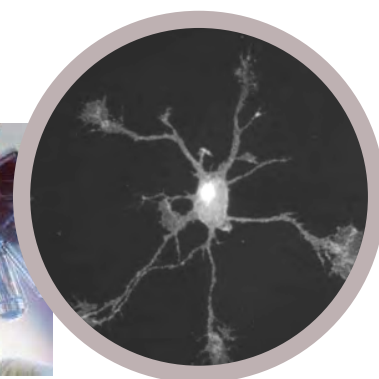
New features such as automatic contrast and edge enhancement offer users greater control and easier use than ever before in this unique one-of-a-kind product from Dage-MTI.



Dage-MTI IR-1000 Infrared CCD Camera and control unit

Ideal for applications such as...

- Electrophysiology
- Fluorescence Microscopy
- Brightfield, Phase Contrast, and Darkfield Microscopy
- Semiconductor Inspection
- Manufacturing Quality Control
- Failure Analysis
- Forensic Analysis
- Teaching Environment



High Sensitivity in Near IR

- Excellent sensitivity in near IR and entire visible spectrum response from 380 nm to 1200 nm
- Provides 5 times more sensitivity at 900 nm

NEW Automatic Contrast

- Electronics instantaneously readjust for optimum contrast
- Useful when changing magnification levels, specimens and/or lighting levels

NEW Edge Enhancement

- Real-time edge enhancement sharpens edges
- Delivers clearer picture by resolving fine details in the image

DAGE-MTI

www.dagemti.com

DAGE-MTI • 219.872.5514 • 701 N. Roeske Ave. • Michigan City, IN 46360

©2012 Dage-MTI, All Rights Reserved

IR-1000 Real Time CCD Camera

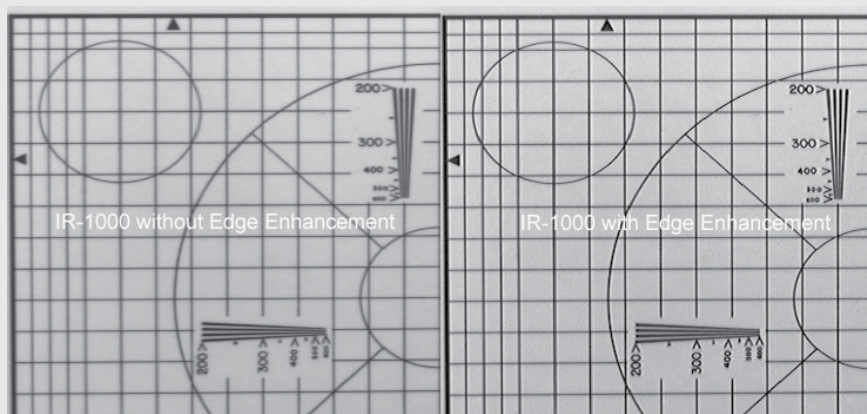
SPECIFICATIONS

Pick-Up Device	1/2" interline CCD with microlens
Signal-to-Noise Ratio	>56dB
Shading	<5% overall
Sensitivity	.05fc (0.5 lux) on sensing area @ 3200K
Minimum Illumination	.00035 fc (.0035 lux)
Gamma Correction	Gamma set to 1.0 at factory
Gain/Black Level	Switchable fixed or automatic (100:1)
Electronic Shutter	Nine-step manual to 1/10,000

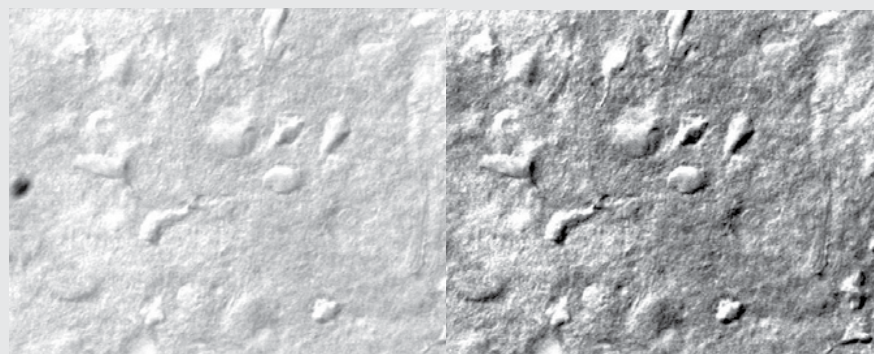
	IR-1000	IR-1000 E
	RS-170	CCIR
Active Picture Elements	768 (H) x 494 (V)	752 (H) x 582 (V)
Picture Element Size	8,5um (H) x 9.8um (V)	8.6um (H) x 8.3um (V)
Horizontal Resolution	570 TVL	560 TVL
Pixel Clock Frequency	14,318 MHz	14,1875 MHz
Vertical Rate	59.94 Hz	50 Hz
Horizontal Rate	15,734 Hz	15,625 Hz

Lens Mount	"C" mount
Options	Computer interface Investigator 1/2" optical coupler

Operating temperature	0°C to +40°C
Input voltage	95 VAC to 250 VAC



- Real-time edge enhancement greatly increases fine detail
- Automatic contrast - When a scene changes, the electronics automatically and instantaneously readjust to achieve optimum contrast



Auto contrast with dark object in field of view

Auto contrast without dark object in field of view

- High sensitivity
- Near infrared
- New! Automatic contrast
- New! Edge enhancement



Dage-MTI IR-1000 Infrared CCD Camera and control unit

Features:

- NIR Spectral Response
- High Sensitivity
- Two-Piece Design
- Wide Range Automatic Gain
- Wide Range Black Level
- Ten-Step Grey Scale Test Signal
- On-Chip Integration

DAGE-MTI

BioMedical Instruments Trading

Hofheimer Straße 63
D- 65719 Hofheim
Phone: +49 6192 2 91 88 66
Fax: +49 6192 90 13 98

Email: biomedical-instruments@science-products.com



in collaboration with:



Science Products Trading SPT AG
Käferholzstr. 142
CH- 4058 Basel
Phone +41 43 488 05 61
Fax: +41 43 488 05 62